



FOR LEASE

• 600 - 4,080 Square Foot Units

FEATURES:

- 24 Hour Access
- Office Space with HVAC
- 100 Amps, 110/208 Volts
- 3 Phase Power
- 10' X 10' Ground Level Doors
- 16' Clearance
- Excellent Access to 55, 57, & 91 Freeways
- Drive Around Building
- Street Frontage Units Available



**645-765 South State College Boulevard
Fullerton, CA 92831**



This information has been furnished from sources which we deem reliable; however, we do not guarantee its accuracy and assume no liability. Do not rely on any of the information contained herein without verifying it yourself directly with the listing broker or owner.

**FOR FURTHER
DETAILS:**

JOHN PAK

john@tricoREALTY.com
License #0483069

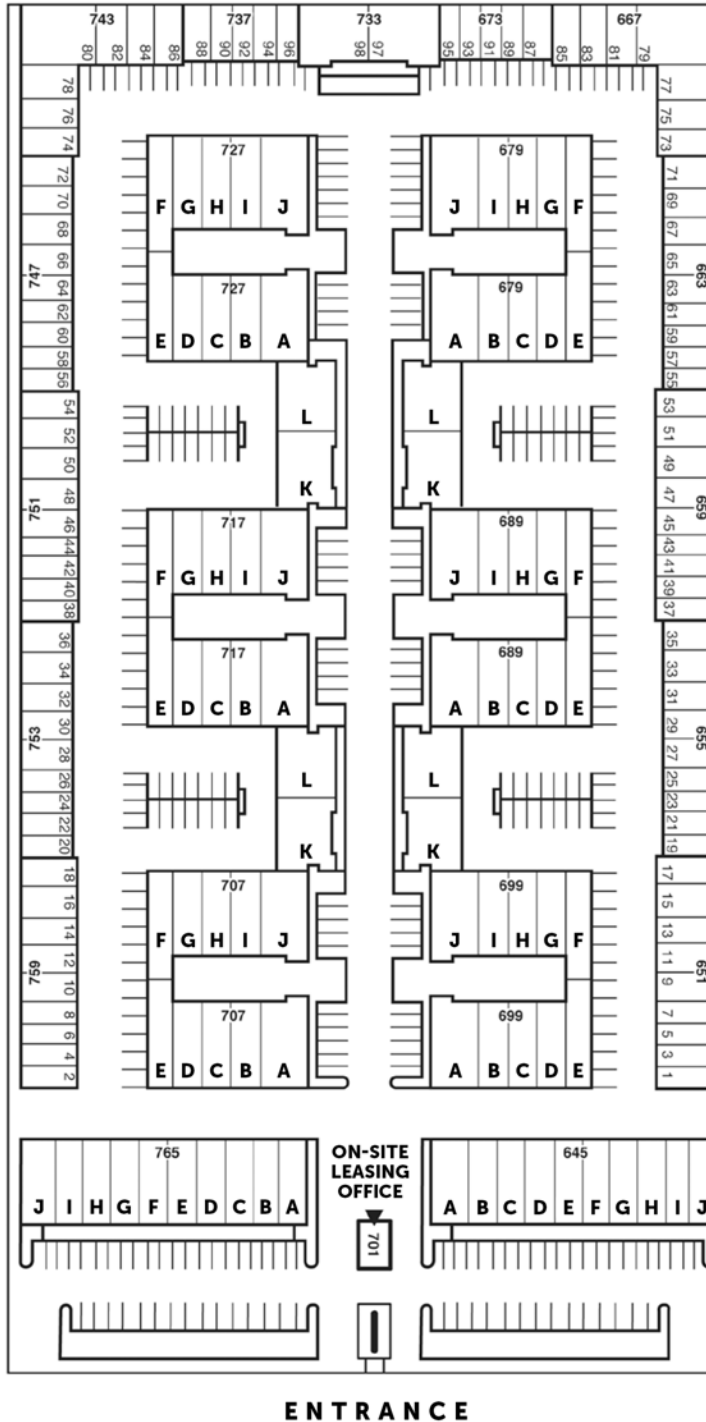
Trico Realty, Inc.

3100-A Pullman Street
Costa Mesa, CA 92626
(714) 751-4420 • License #00342120

For additional information
Visit our Website at www.TricoRealty.com



KIMBERLY AVE.





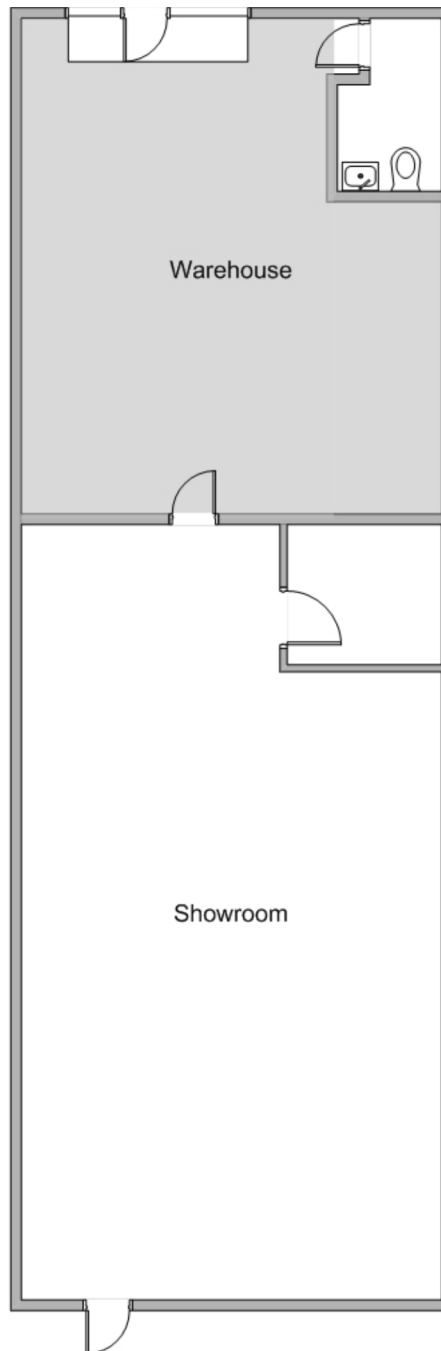
645 S. State College Blvd., Unit B, Fullerton, CA, 92631
1,200 Sq. Ft.

**For Further Information,
please contact:**

John Pak
DRE#01483069
john@tricoREALTY.com
714-751-4420

Visit us at
www.tricoREALTY.com

Not to Scale



3100-A Pullman St.
Costa Mesa, CA 92626

O: 714.751.4420
F: 714.540.4579

TricoRealty.com

BROKERAGE
DEVELOPMENT
MANAGEMENT