



# Floor Plan

22845 Savi Ranch Parkway, Unit G, Yorba Linda, CA 92887

For further information, please contact:

**2,016 Sq. Ft.**

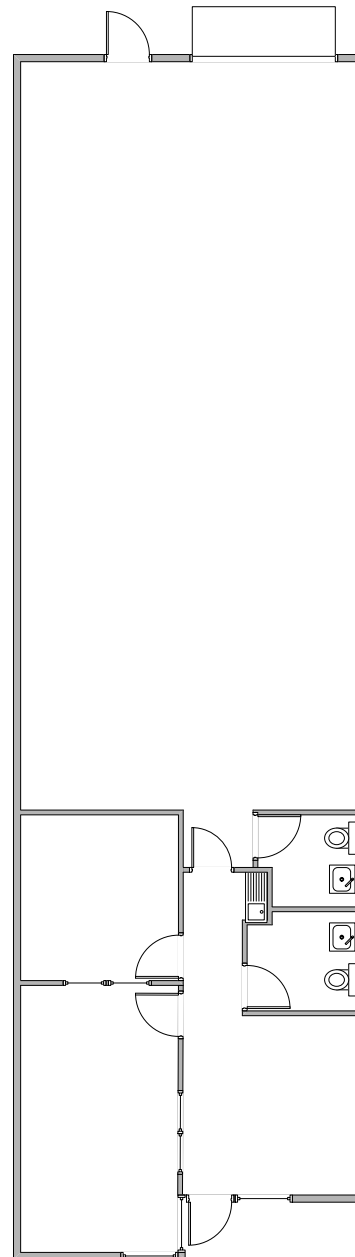
Ren Glanz  
BRE# 01192242  
ren@tricorealty.com  
714-751-4420

Visit us at  
[www.tricorealty.com](http://www.tricorealty.com)

Mark Hintergardt  
BRE# 00865136  
mhintergardt@lee-associates.com  
D 714-564-7168  
C 714-272-0080

Pat Delaney  
BRE# 00962861  
pdelaney@lee-associates.com  
D 714-564-7127  
C 714-742-7940

Visit us at  
[www.lee-associates.com/orange](http://www.lee-associates.com/orange)



Not Drawn to Scale