



FOR LEASE

1334 E. Orangethorpe Ave.
Fullerton, CA

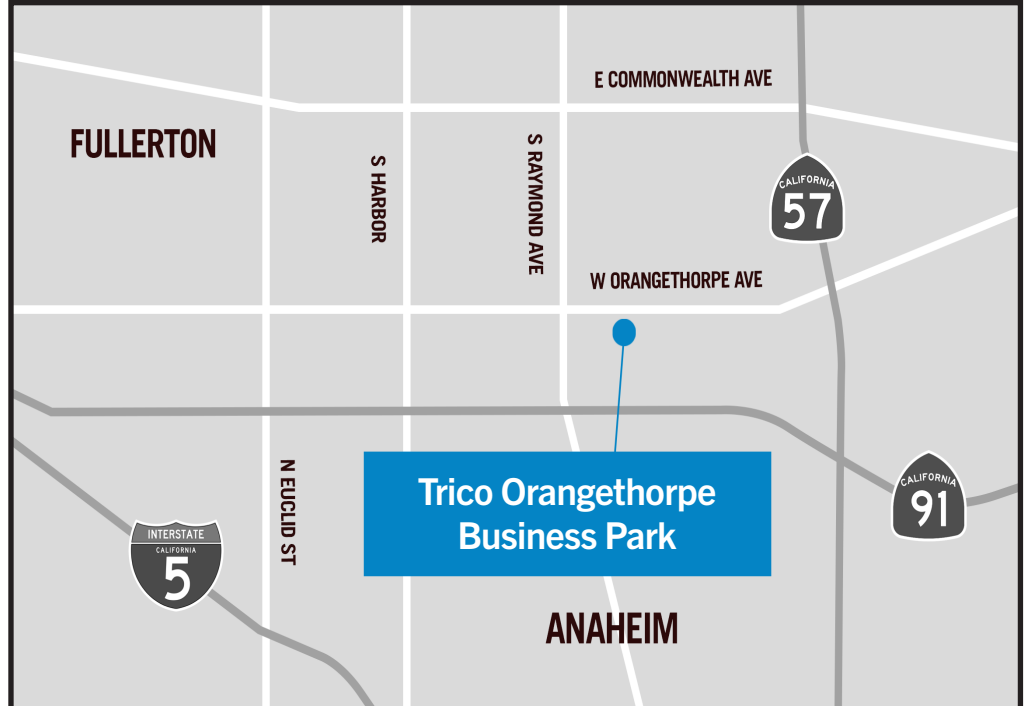
3,200 SF Industrial Unit

SITE HIGHLIGHTS:

- Pylon Signage Available
- Clean Well Maintained Park
- Street Frontage on Orangethorpe
- Close to 91 and 57 Freeways
- Plenty of Parking
- Intimate & Quiet Industrial Park

UNIT FEATURES:

- LVP Flooring
- 100% HVAC in Office Area
- Large Reception
- 100 Amps, 3 Phase, 4 Wire



FOR FURTHER DETAILS:

JOHN PAK

john@tricoREALTY.com
License #01483069

This information has been furnished from sources which we deem reliable; however, we do not guarantee its accuracy and assume no liability. Do not rely on any of the information contained herein without verifying it yourself directly with the listing broker or owner.

Trico Realty, Inc.
License #00342120

3100-A Pullman Street
Costa Mesa, CA 92626

714-751-4420
TricoRealty.com




FOR LEASE

1334 E. Orangethorpe Ave.
Fullerton, CA

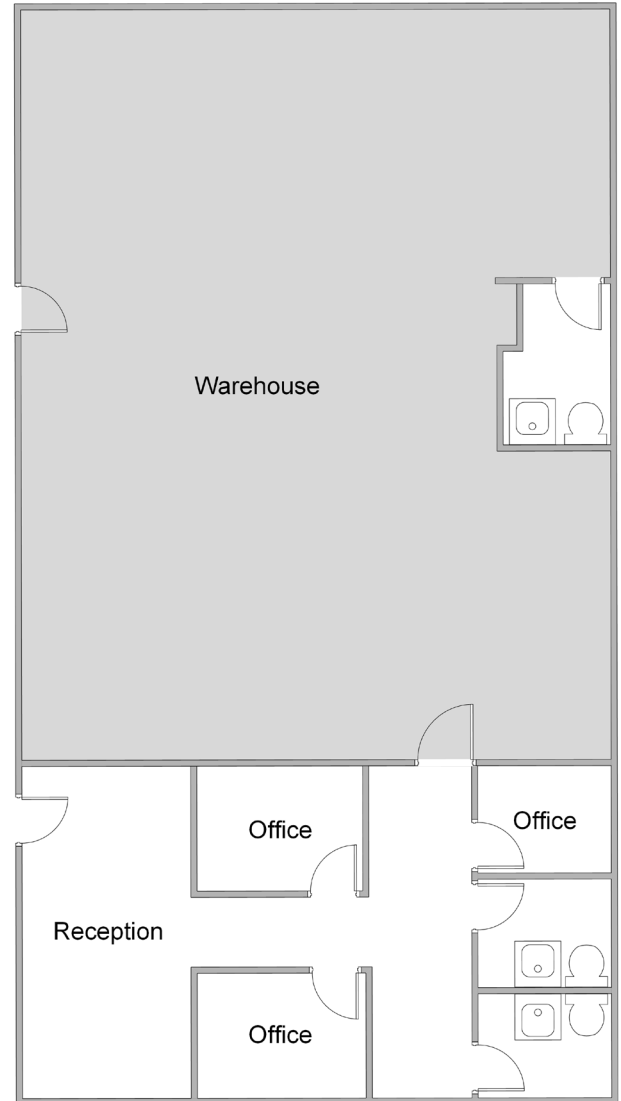
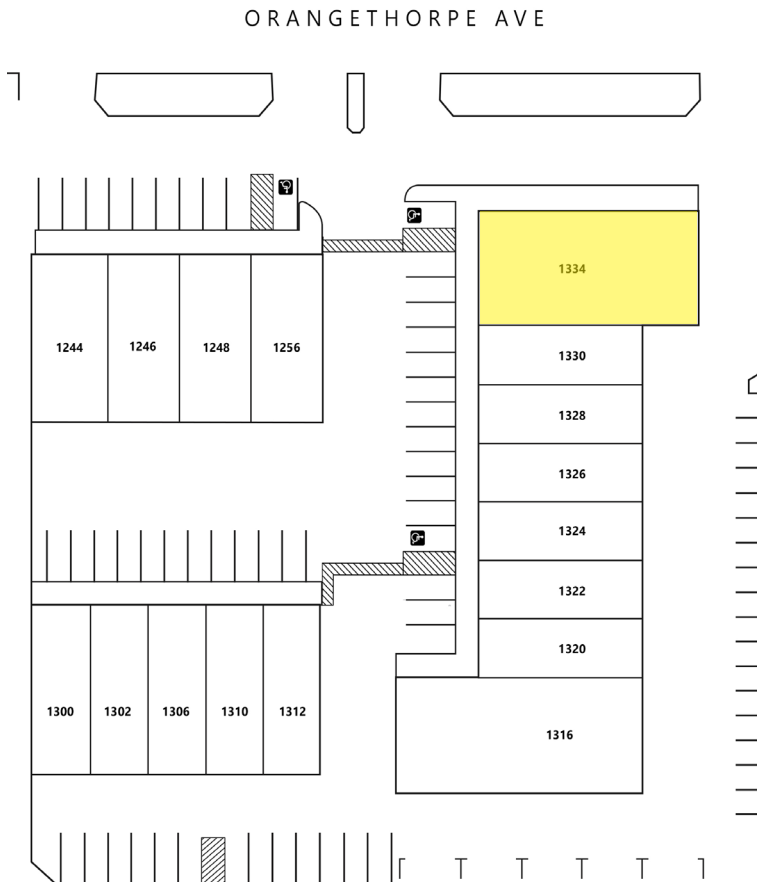
3,200 SF Industrial Unit

Unit Features

 Power: 200A | 120/208

 Clearance Height: 15'

 Ground Level Doors: One 10'x10'



*Floorplans Not to Scale

JOHN PAK
john@tricoREALTY.com
License #01483069

714-751-4420
TricoREALTY.com
License #00342120