



# FOR LEASE

1643 W. Orange Grove Ave.  
Orange, CA

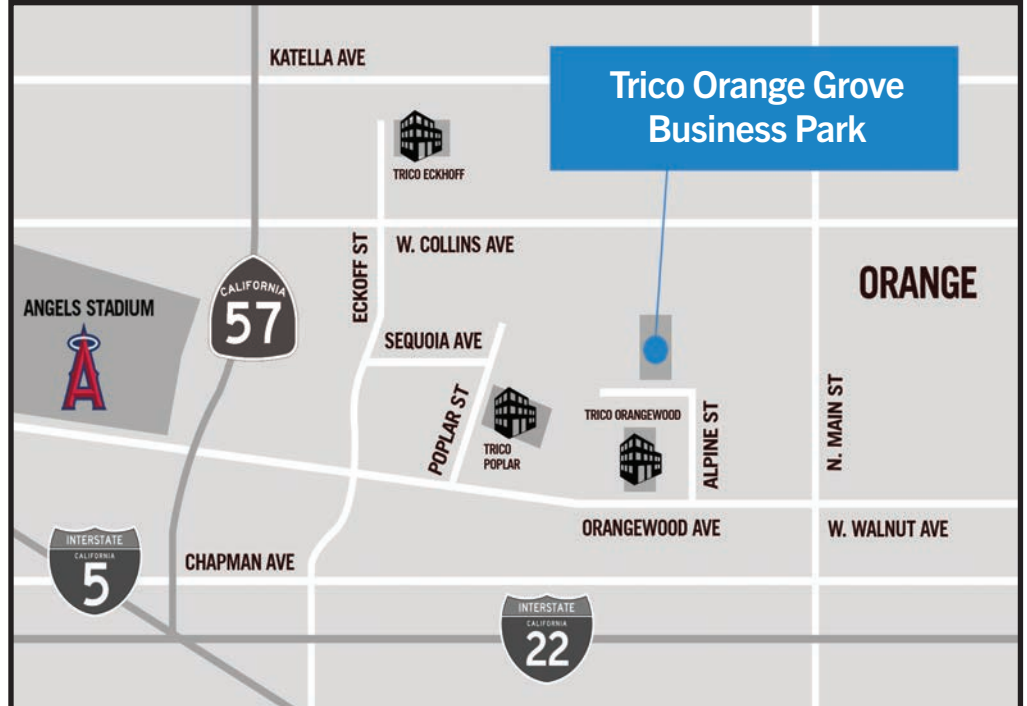
12,600 SF Industrial Unit

## SITE HIGHLIGHTS:

- Close Proximity to the 57, 5, and 22 Freeways
- Professionally Managed
- Plenty of Parking

## UNIT FEATURES:

- Large Secured Yard!
- 18' Clearance Height
- 2 Ground Level Doors
- Stand Alone Building
- 3-Phase 400 Amp 120/240 Volts of Power



## FOR FURTHER DETAILS:

ERIN GARNER

erin@tricoREALTY.com  
License #02228139

DAVID KLING

david@tricoREALTY.com  
License #01965659

This information has been furnished from sources which we deem reliable; however, we do not guarantee its accuracy and assume no liability. Do not rely on any of the information contained herein without verifying it yourself directly with the listing broker or owner.

Trico Realty, Inc.  
License #00342120

3100-A Pullman Street  
Costa Mesa, CA 92626

714-751-4420  
TricoRealty.com




# FOR LEASE

1643 W. Orange Grove Ave.  
Orange, CA

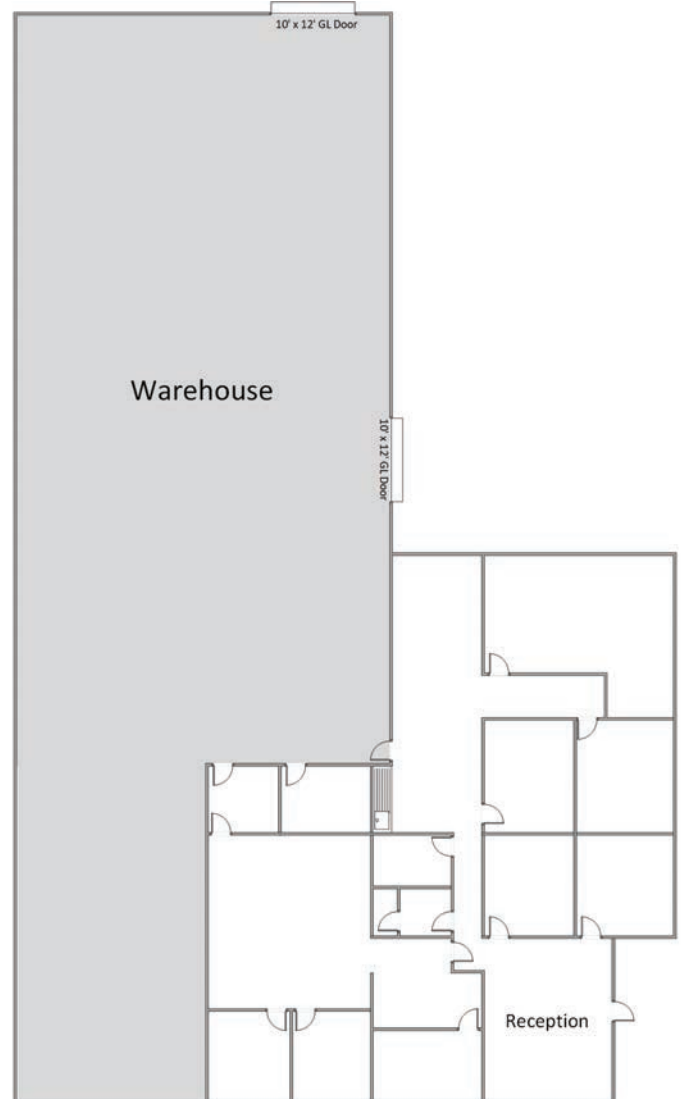
**12,600 SF Industrial Unit**

## Unit Features

 Power: 400A | 120/240

 Clearance Height: 18'

 Ground Level Doors: Two 10'x12'



\*Floorplans Not to Scale

**ERIN GARNER**  
erin@tricoREALTY.com  
License #02228139

**DAVID KLING**  
david@tricoREALTY.com  
License #01965659

**714-751-4420**  
**TricoRealty.com**  
License #00342120