



FOR LEASE

951 Newhall Street
Costa Mesa, CA

2,900 SF Industrial Unit

SITE HIGHLIGHTS:

- Premier Westside Costa Mesa Location
- Business Park Environment
- Retail and Restaurant Amenities Nearby
- Professional Local Property Management
- Zoning: MG - General Industrial

UNIT FEATURES:

- Window Lined Storefront
- HVAC for the Offices and Warehouse
- Reception + 1 Private Office
- Kitchenette
- Two Restrooms
- 10' x 12' Warehouse Roll Up Door



FOR FURTHER DETAILS:

PARKER ROBERTS

parker@tricorealty.com
License #01994597

This information has been furnished from sources which we deem reliable; however, we do not guarantee its accuracy and assume no liability. Do not rely on any of the information contained herein without verifying it yourself directly with the listing broker or owner.

Trico Realty, Inc.
License #00342120

3100-A Pullman Street
Costa Mesa, CA 92626

714-751-4420
TricoRealty.com




FOR LEASE

951 Newhall Street
Costa Mesa, CA

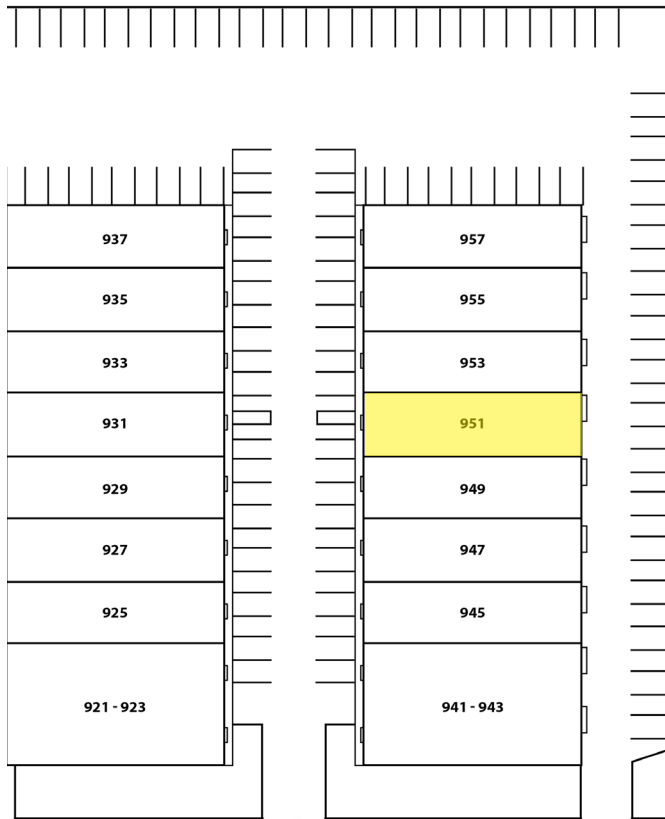
2,900 SF Industrial Unit

Unit Features

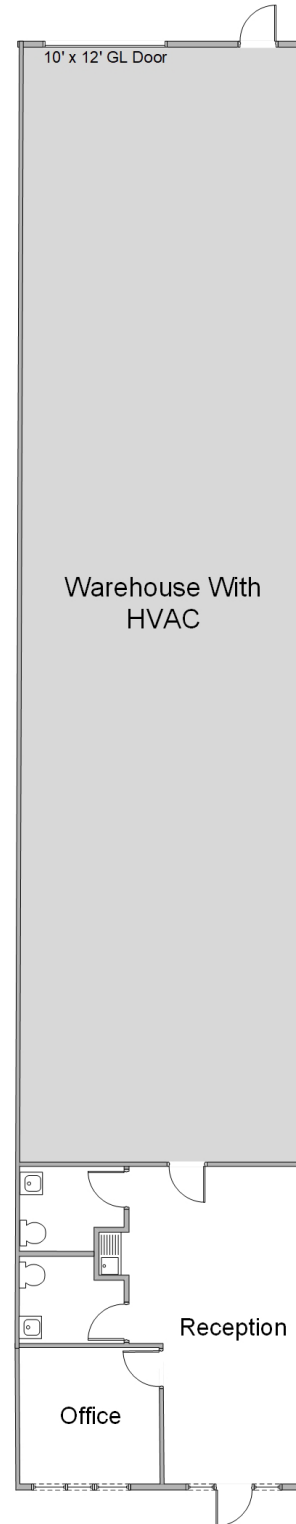
 Power: 100A | 120/208

 Clearance Height: 16'

 Ground Level Doors: One 10'x12'



NEWHALL STREET



*Floorplans Not to Scale

PARKER ROBERTS
parker@tricoREALTY.com
License #01994597

714-751-4420
TricoREALTY.com
License #00342120