



**FOR LEASE**

**1,296 - 3,142 Square Foot Units**

## FEATURES:

### OFFICE FEATURES:

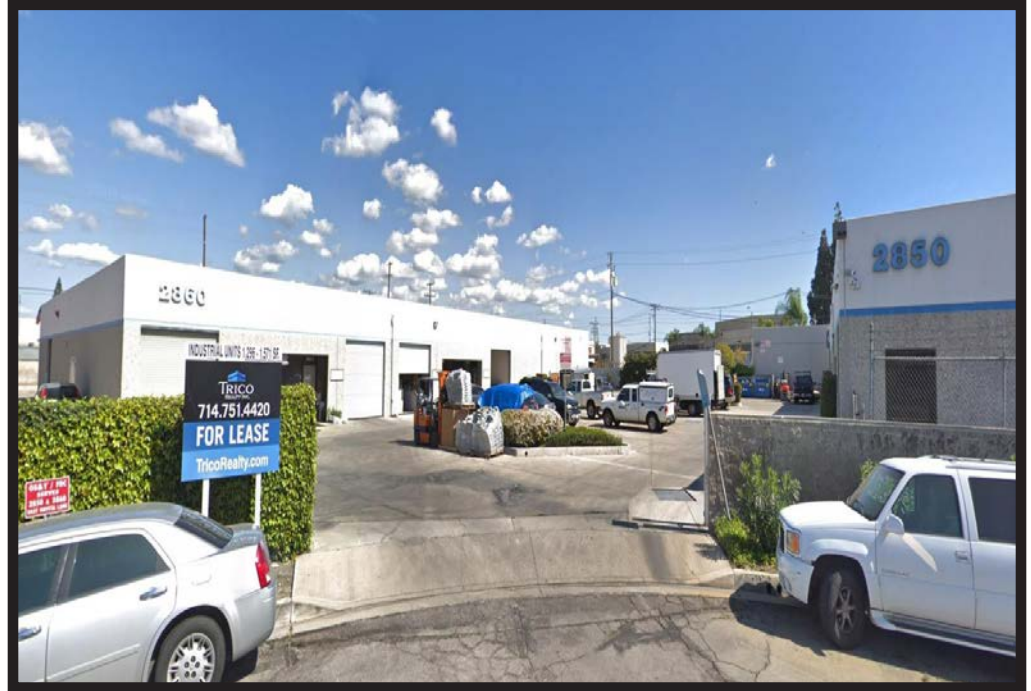
- 200 square feet
- Air Conditioned / Heated

### WAREHOUSE FEATURES:

- Min. 100 AMP, 120/280 Volts
- 10' x 10' Ground level Door
- 14' Clearance

### OTHER FEATURES:

- All Concrete Drive Around Buildings
- Fire Sprinklered
- Video Surveillance
- Exterior Security Lighting
- Cul de Sac Location
- Freeway Close to 55, 57, & 91



**2850-2860 E. Gretta Lane, Anaheim, CA 92806**



This information has been furnished from sources which we deem reliable; however, we do not guarantee its accuracy and assume no liability. Do not rely on any of the information contained herein without verifying it yourself directly with the listing broker or owner.

## FOR FURTHER DETAILS:

### JOHN PAK

john@tricoREALTY.com  
License #01483069

### REN GLANZ

ren@tricoREALTY.com  
License #01192242

## Trico Realty, Inc.

3100-A Pullman Street  
Costa Mesa, CA 92626  
(714) 751-4420 • License #00342120

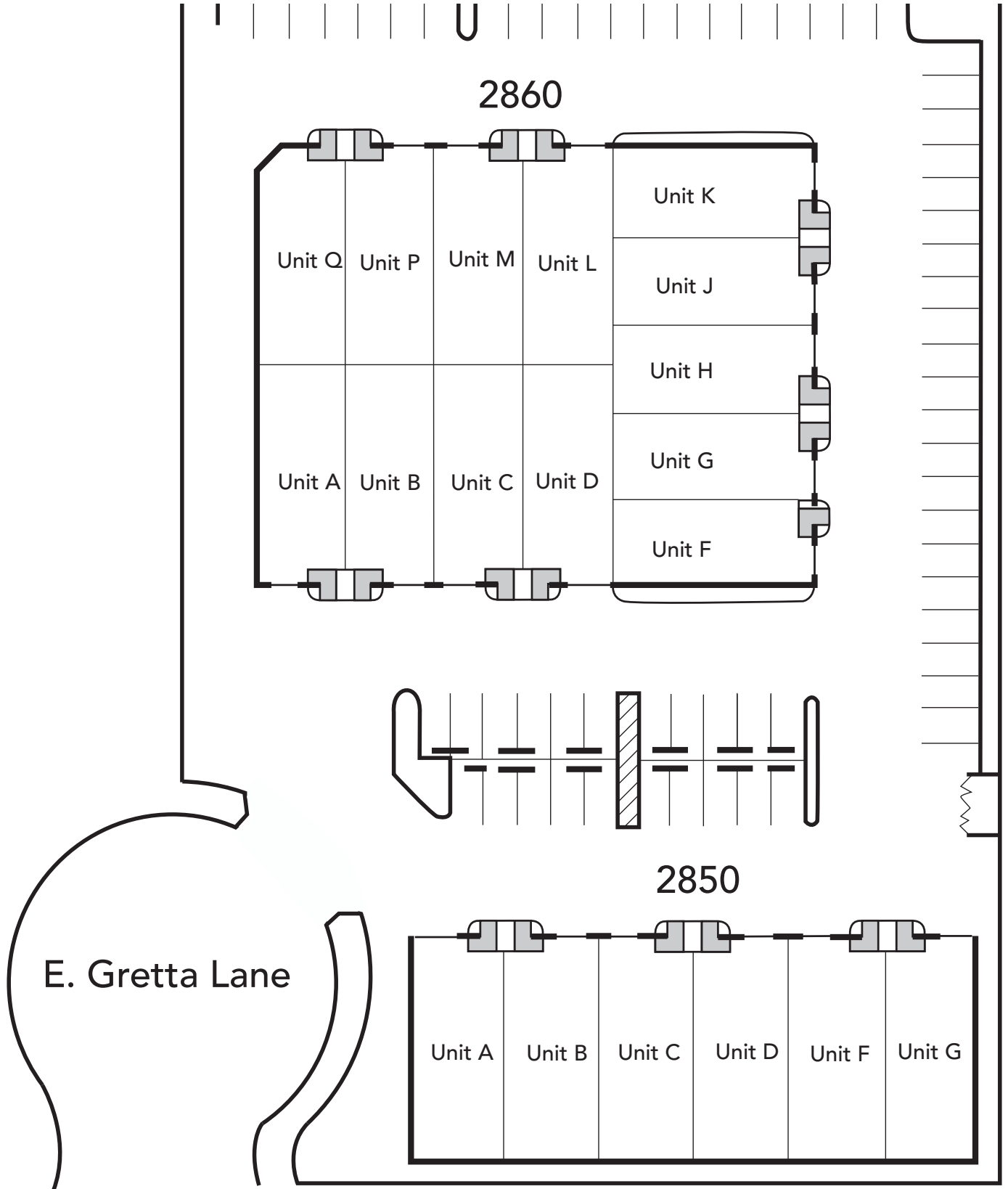
For additional information  
Visit our Website at [www.TricoRealty.com](http://www.TricoRealty.com)



2850 - 2860 E. Gretta Lane  
Anaheim, CA 92806

FOR LEASE

1,296 - 3,142 Square Foot Units



Trico Realty, Inc.

3100-A Pullman Street  
Costa Mesa, CA 92626

(714) 751-4420 • License #00342120

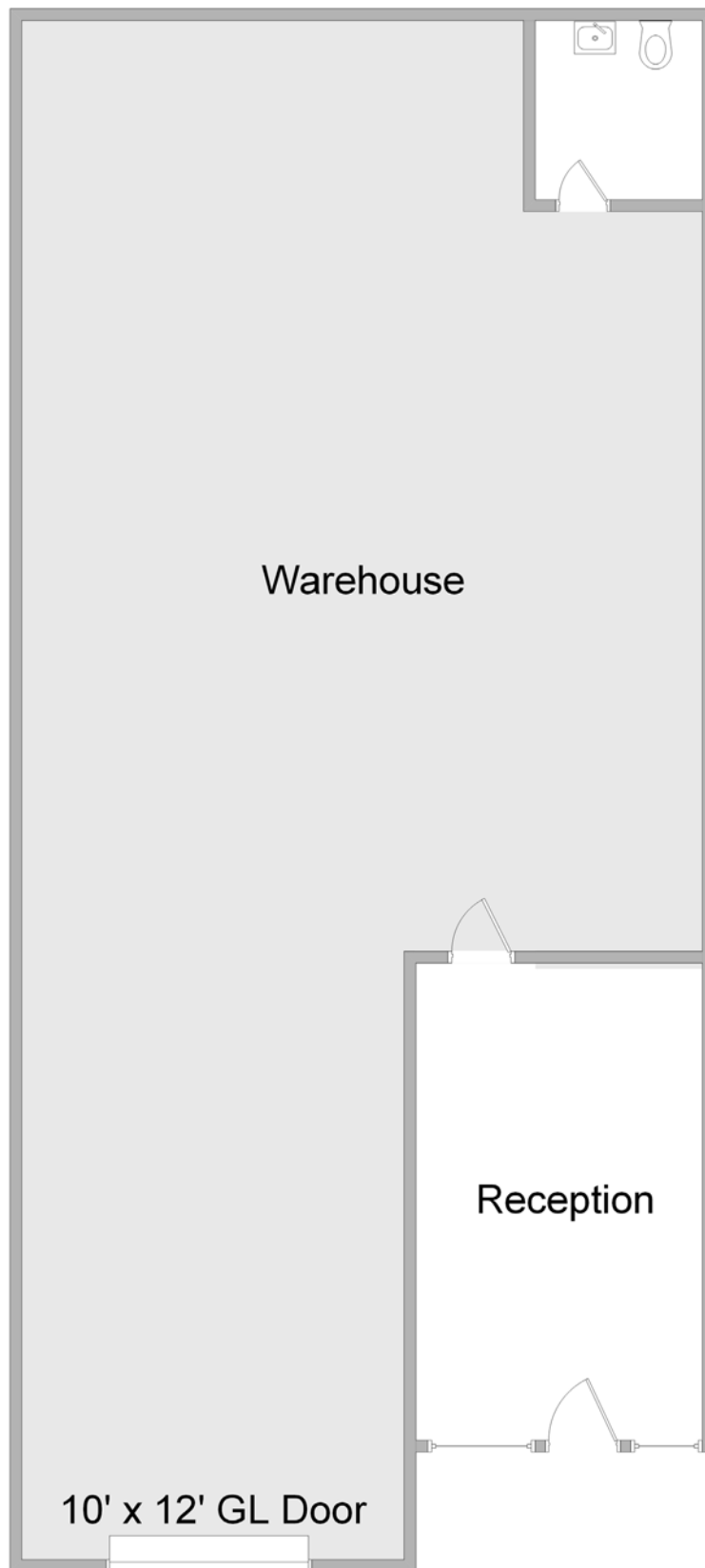
For additional information  
Visit our Website at [www.TricoRealty.com](http://www.TricoRealty.com)



2850 - 2860 E. Gretta Lane  
Anaheim, CA 92806

**FOR LEASE**

1,296 - 3,142 Square Foot Units



**Trico Realty, Inc.**

3100-A Pullman Street  
Costa Mesa, CA 92626

(714) 751-4420 • License #00342120

For additional information  
Visit our Website at [www.TricoRealty.com](http://www.TricoRealty.com)

