



FOR LEASE

750 Columbia Street
Brea, CA 92821

10,912 SF Industrial Unit

SITE HIGHLIGHTS:

- Excellent Access to the 57 Freeway
- Free Standing Building

UNIT FEATURES:

- 1,830 SF HVAC Office Space
- 2 Restrooms
- Coffee Bar
- 1 Shop Rest Room
- Energy Efficient Lighting in Warehouse
- Two 12' x 14' GL Doors
- Fire Sprinklers
- Skylights
- Small Fenced Yard Space
- 200 Amps, 120-208 Volts, 3 Phase Power



FOR FURTHER DETAILS:

DAVID KLING

david@tricoREALTY.com
License #01965659

ERIN GARNER

erin@tricoREALTY.com
License #02229139

This information has been furnished from sources which we deem reliable; however, we do not guarantee its accuracy and assume no liability. Do not rely on any of the information contained herein without verifying it yourself directly with the listing broker or owner.

Trico Realty, Inc.
License #00342120

3100-A Pullman Street
Costa Mesa, CA 92626

714-751-4420
TricoRealty.com




FOR LEASE

750 Columbia Street
Brea, CA 92821

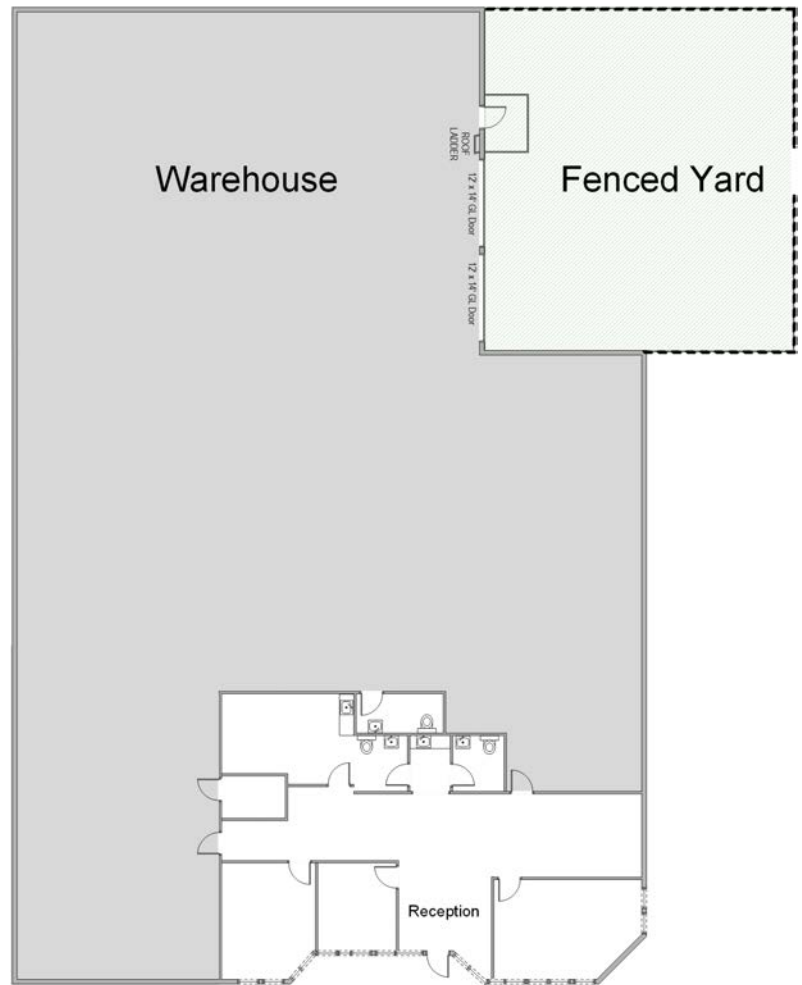
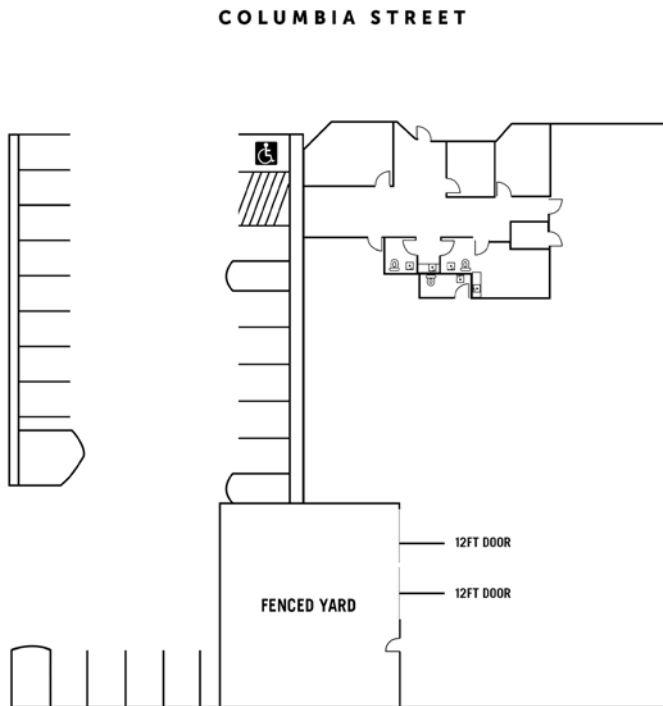
10,912 SF Industrial Unit

Unit Features

 Power: 200A | 120/208

 Clearance Height: 16'

 Ground Level Doors: Two 12'x14'



*Floorplans Not to Scale

DAVID KLING
david@tricoREALTY.com
License #01965659

ERIN GARNER
erin@tricoREALTY.com
License #02229139

714-751-4420
TricoREALTY.com
License #00342120