



# FOR LEASE

1801 Carnegie Ave.  
Santa Ana, CA 92705

12,000 SF SF Building

## SITE HIGHLIGHTS:

- Business Park Environment
- Professional Property Management
- Excellent Access to the 55, 405, & 5 Free-ways
- Adjacent to The District at Tustin Legacy
- Zoning: M1 - Light Industrial

## BUILDING FEATURES:

- ±12,000 SF
- Conditioned Assembly Area with Warehouse Bays on Each Side
- Open Work Spaces & Private Offices
- Glass Lined Conference Room
- Panel 1: 400 Amps | 240v 3 Phase
- Panel 2: 400 Amps | 120/240v Single Phase
- Two Warehouse Restrooms
- Two Office Restrooms



## FOR FURTHER DETAILS:

**PARKER ROBERTS**

parker@tricoREALTY.com  
License #01994597

This information has been furnished from sources which we deem reliable; however, we do not guarantee its accuracy and assume no liability. Do not rely on any of the information contained herein without verifying it yourself directly with the listing broker or owner.

**Trico Realty, Inc.**  
License #00342120

3100-A Pullman Street  
Costa Mesa, CA 92626

**714-751-4420**  
TricoRealty.com



# FOR LEASE

1801 Carnegie Ave.  
Santa Ana, CA 92705


12,000 SF SF Building

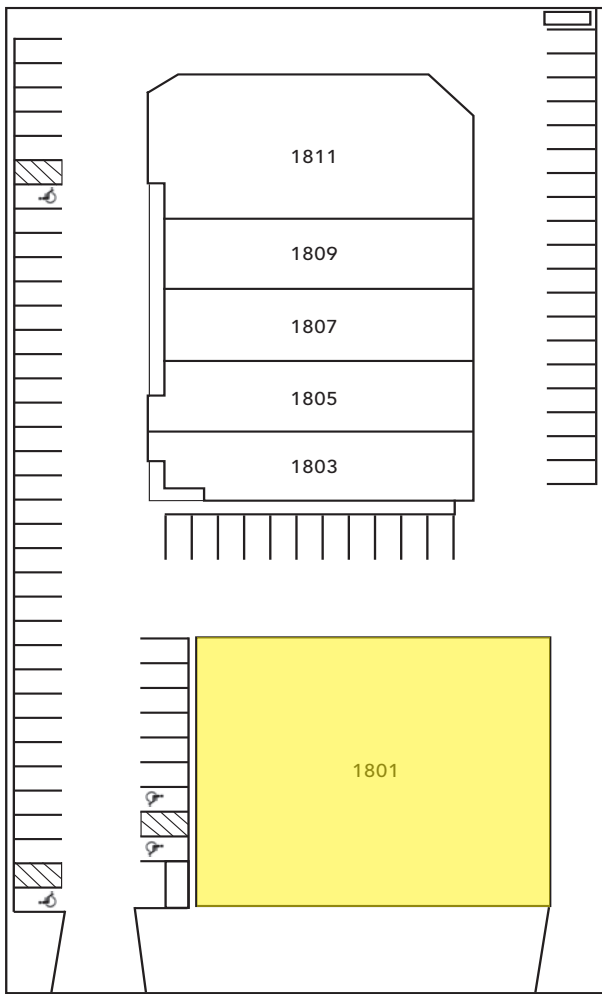
## Unit Features

 Power: Panel 1: 400A | 240v 3 Phase

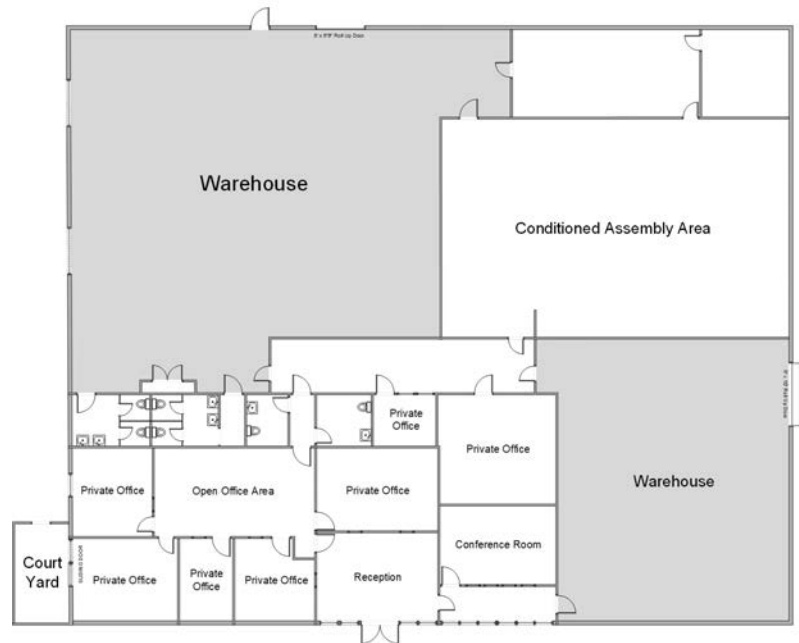
Panel 2: 400A | 120/240v Single Phase

 Clearance Height: 12'

 Ground Level Doors: One 8'x10' & One 8' x 6'9"



Carnegie Avenue



\*Floorplans Not to Scale

**PARKER ROBERTS**  
parker@tricoREALTY.com  
License #01994597

**714-751-4420**  
**TricoRealty.com**  
License #00342120