



PROPERTY INFO

- Formerly a Mattress Store
- End Cap Corner Unit with Large Facade Signage Potential
- Exterior LED Security Lighting
- Traffic Count: 46,000+
- Pylon Signage Available



1251 S. Beach Blvd., Suite E, La Habra, CA
2,223 SF Retail Suite Available



This information has been furnished from sources which we deem reliable; however, we do not guarantee its accuracy and assume no liability. Do not rely on any of the information contained herein without verifying it yourself directly with the listing broker or owner.

FOR FURTHER DETAILS:

JOHN PAK

john@tricoREALTY.com
License #01483069

PARKER ROBERTS

parker@tricoREALTY.com
License #01994597

Trico Realty, Inc.

3100-A Pullman Street
Costa Mesa, CA 92626
(714) 751-4420 • License #00342120

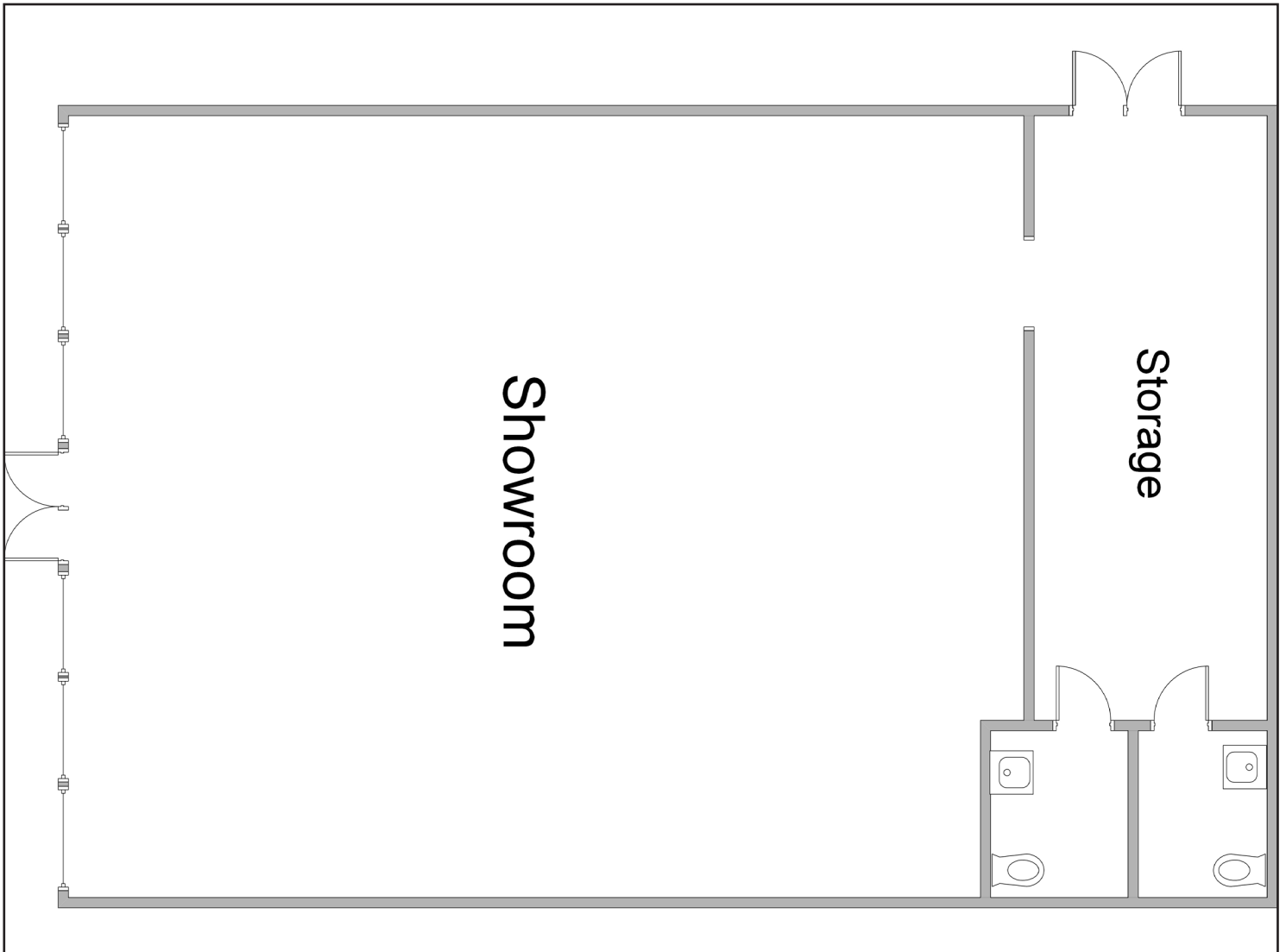
For additional information
Visit our Website at www.TricoRealty.com



RETAIL SUITES FOR LEASE

Beach Commerce Center

1251-E S. Beach Blvd., La Habra



Trico Realty, Inc.

3100-A Pullman Street
Costa Mesa, CA 92626

(714) 751-4420 • License #00342120

For additional information
Visit our Website at www.TricoRealty.com

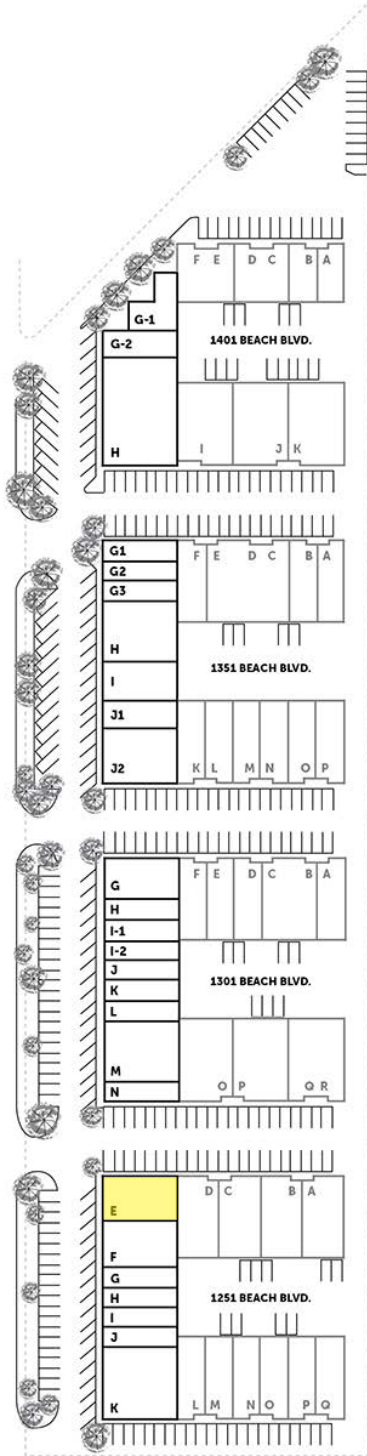


RETAIL SUITES FOR LEASE

Beach Commerce Center

1251-E S. Beach Blvd., La Habra

BEACH BOULEVARD



1401 BEACH BOULEVARD

UNIT

G-1	1,449 SF
G-2	1,370 SF
H	5,539 SF

1351 BEACH BOULEVARD

UNIT

G1	868 SF
G2	1,253 SF
G3	1,011 SF
H	3,132 SF
I	1,789 SF
J1	1,345 SF
J2	3,130 SF

1301 BEACH BOULEVARD

UNIT

G	2,103 SF
H	1,000 SF
I-1	1,027 SF
I-2	952 SF
J	1,024 SF
K	1,024 SF
L	984 SF
M	2,161 SF
N	2,085 SF

1251 BEACH BOULEVARD

UNIT

E	2,223 SF
F	2,223 SF
G	1,117 SF
H	1,117 SF
I	1,117 SF
J	1,117 SF
K	2,223 SF

IMPERIAL HWY

Trico Realty, Inc.

3100-A Pullman Street
Costa Mesa, CA 92626

(714) 751-4420 • License #00342120

For additional information

Visit our Website at www.TricoRealty.com

