



740 S. Van Buren Street, Unit C, Placentia, CA, 92870  
1,150 Sq. Ft.

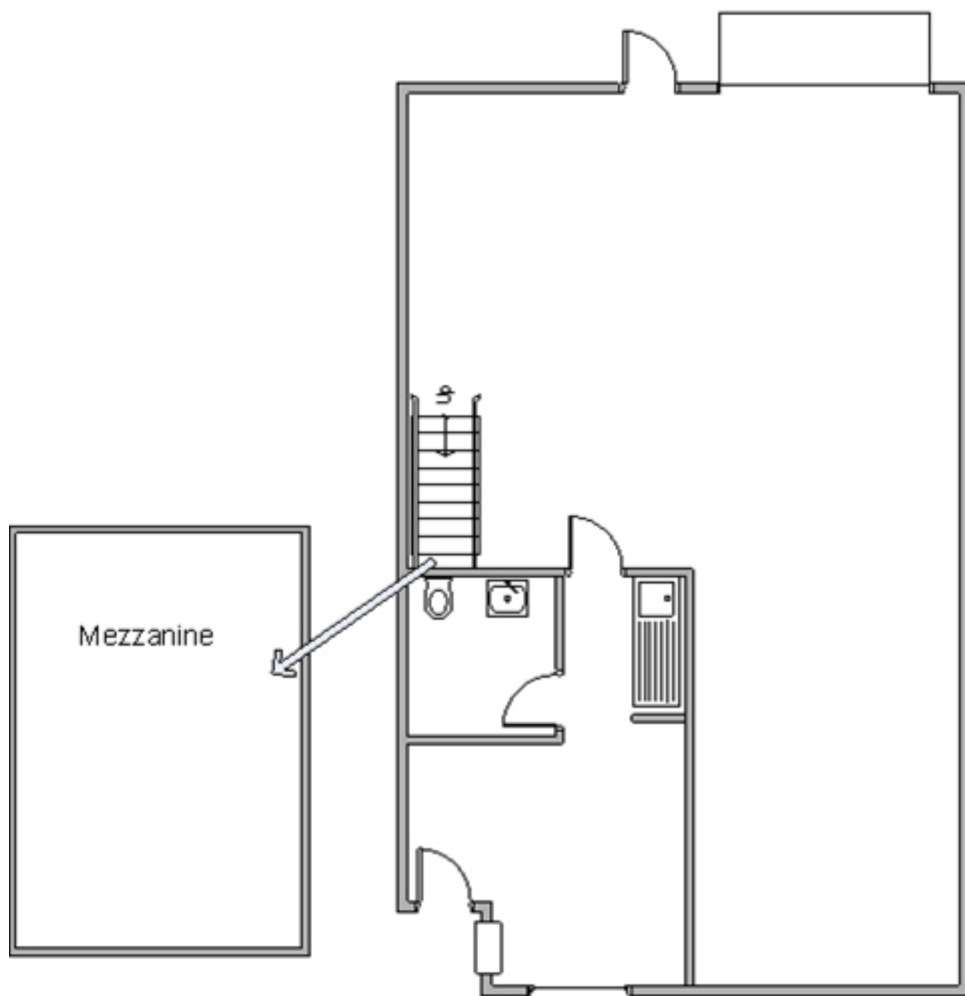
**For Further Information,  
please contact:**

Ren Glanz  
DRE#01192242  
ren@tricoREALTY.com  
714-751-4420

John Pak  
DRE#01483069  
john@tricoREALTY.com  
714-751-4420

Visit us at  
[www.tricoREALTY.com](http://www.tricoREALTY.com)

**Not to Scale**



3100-A Pullman St.  
Costa Mesa, CA 92626

O: 714.751.4420  
F: 714.540.4579

[TricoRealty.com](http://TricoRealty.com)

**BROKERAGE  
DEVELOPMENT  
MANAGEMENT**