



22805 Savi Ranch Parkway, Unit D, Yorba Linda, CA, 92887

4,800 Sq. Ft.

Visit us at www.tricoREALTY.com

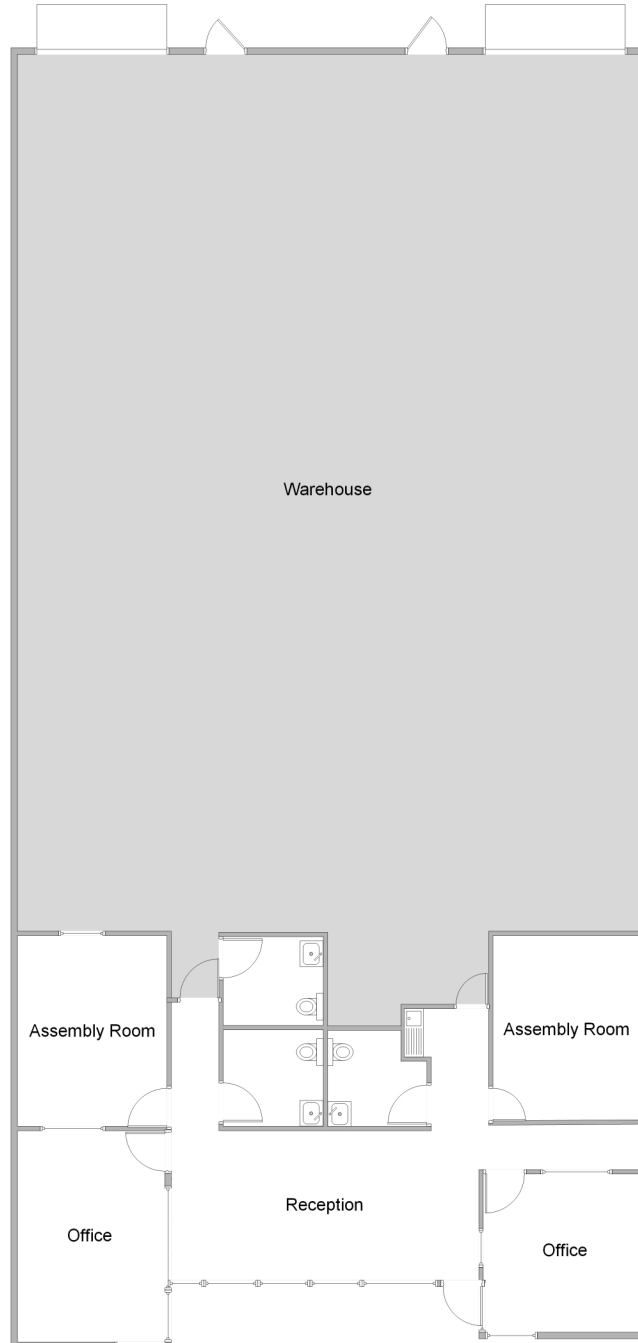
Floor Plan Not to Scale

For Further Information, please contact:

Mark Hintergardt - DRE#00865136
mhintergardt@lee-associates.com
714-564-7168

Ren Glanz - DRE#01192242
ren@tricoREALTY.com
714-751-4420

Pat Delaney - DRE#00962861
pdelaney@lee-associates.com
714-564-7127



3100-A Pullman St.
Costa Mesa, CA 92626

O: 714.751.4420
F: 714.540.4579

TricoRealty.com

BROKERAGE
DEVELOPMENT
MANAGEMENT