



22845 Savi Ranch Parkway, Unit E, Yorba Linda, CA, 92887
2,016 Sq. Ft.

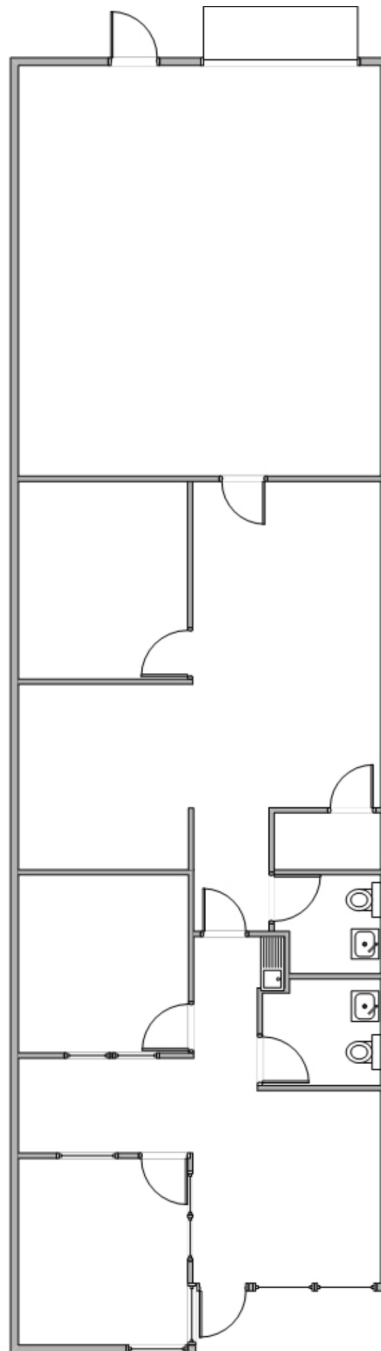
**For Further Information, please
contact:**

Ren Glanz
DRE#01192242
ren@tricorealty.com
714-751-4420

Mark Hintergardt /
Pat Delaney
DRE#0096286/00865136
pdelaney@lee-associates.com/
mhintergardt@lee-associates.com
714-751-4420

Visit us at
www.tricorealty.com

Not to Scale



3100-A Pullman St.
Costa Mesa, CA 92626

O: 714.751.4420
F: 714.540.4579

TricoRealty.com

**BROKERAGE
DEVELOPMENT
MANAGEMENT**