



**FOR LEASE**

**600 - 4,080 Square Foot Units**

**FEATURES:**

- 24 Hour Access
- Office Space with HVAC
- 100 Amps, 120/208 Volts
- 3 Phase Power
- 10' X 10' Ground Level Doors
- 16' Clearance
- Excellent Access to 55, 57, & 91 Freeways
- Drive Around Building
- Street Frontage Units Available



**645-765 South State College Boulevard  
Fullerton, CA 92831**



This information has been furnished from sources which we deem reliable; however, we do not guarantee its accuracy and assume no liability. Do not rely on any of the information contained herein without verifying it yourself directly with the listing broker or owner.

**FOR FURTHER  
DETAILS:**

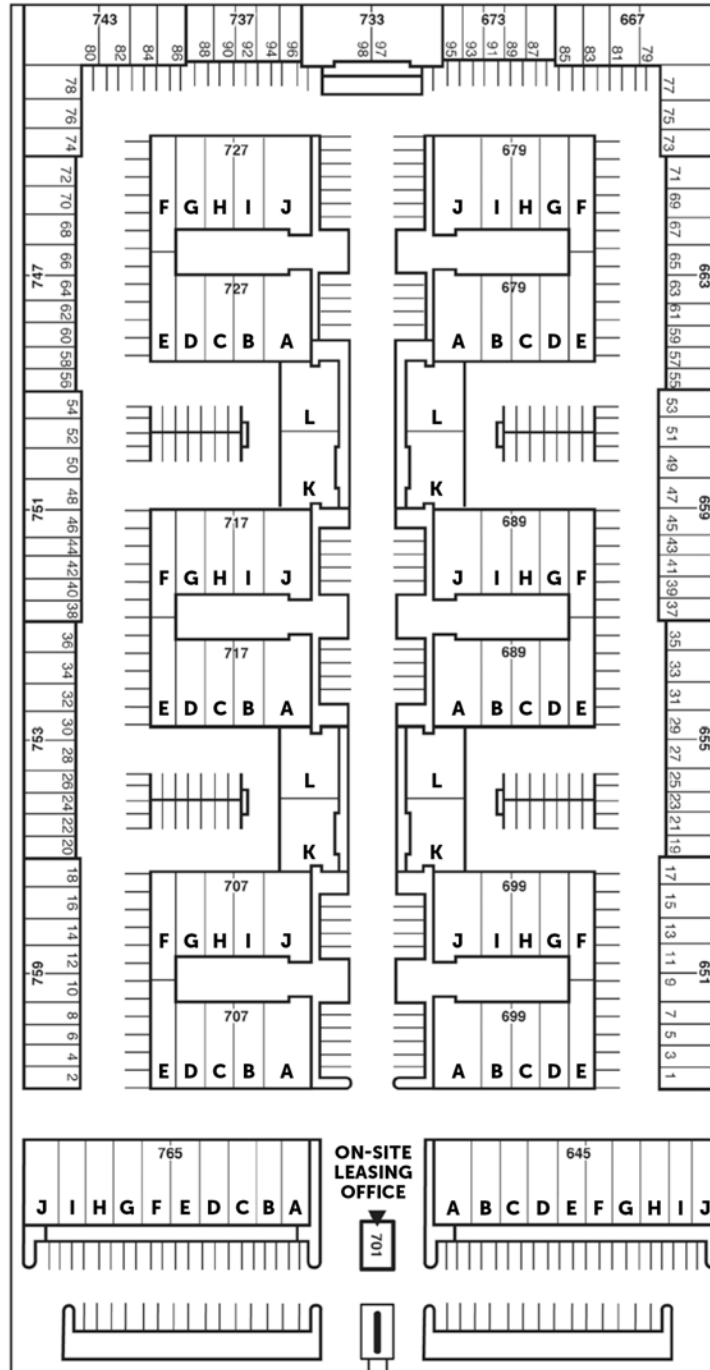
**JOHN PAK**  
john@tricoREALTY.com  
License #0483069

**Trico Realty, Inc.**  
3100-A Pullman Street  
Costa Mesa, CA 92626  
(714) 751-4420 • License #00342120

For additional information  
Visit our Website at [www.TricoRealty.com](http://www.TricoRealty.com)



KIMBERLY AVE.

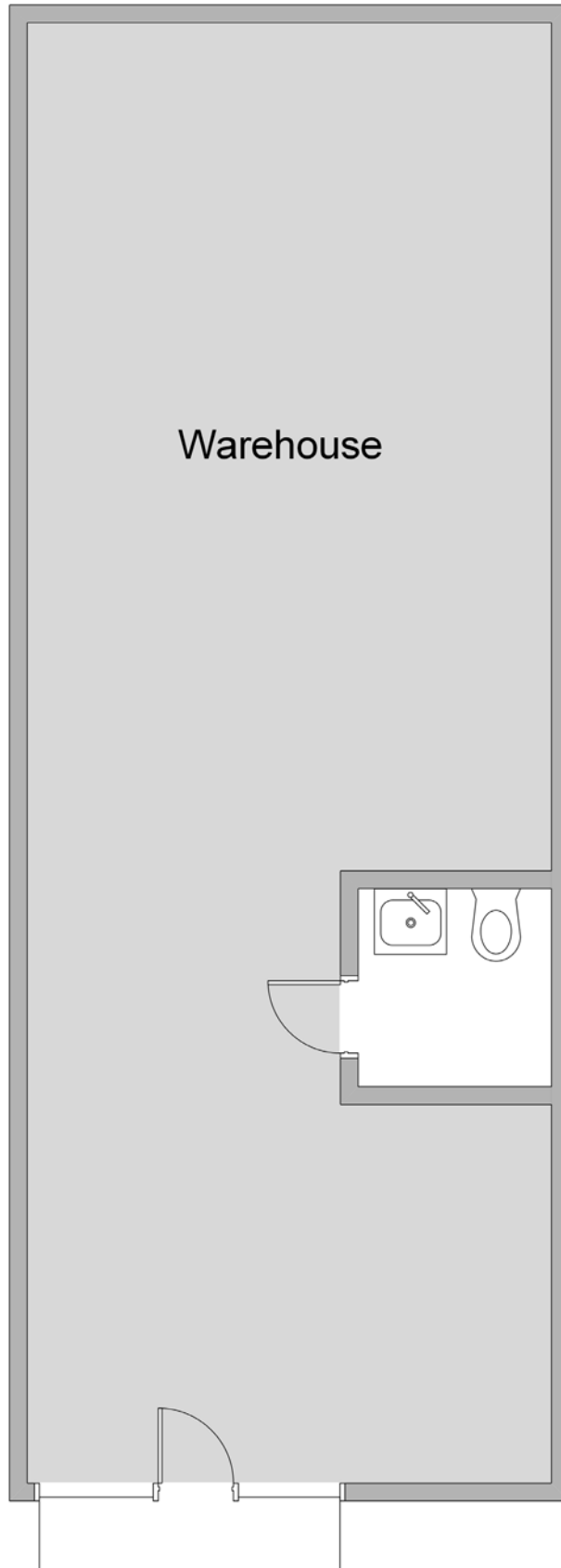


ENTRANCE

645-765 South State College Boulevard  
Fullerton CA 92831

**FOR LEASE**

600 - 4,080 Square Foot Units



**Trico Realty, Inc.**

3100-A Pullman Street  
Costa Mesa, CA 92626

(714) 751-4420 • License #00342120

For additional information  
Visit our Website at [www.TricoRealty.com](http://www.TricoRealty.com)

