



**FOR LEASE**

**2,232 SF Industrial Unit**

**SITE HIGHLIGHTS:**

- Business Park Environment
- Professional Property Management
- Premier Orange County Location
- Excellent Access to 57, 5, 22 Freeways
- Drive Around Building
- M-1 Zone



**UNIT FEATURES:**

- Two Private Offices
- LED Lighting
- High Ceilings
- Two Restrooms
- 17' Warehouse Clearance
- 10'x12' Grade Level Warehouse Door

**615 N. Poplar  
Orange, CA 92868**



This information has been furnished from sources which we deem reliable; however, we do not guarantee its accuracy and assume no liability. Do not rely on any of the information contained herein without verifying it yourself directly with the listing broker or owner.

**FOR FURTHER  
DETAILS:**

**PARKER ROBERTS**

parker@tricoREALTY.com  
License #01994597

**REN GLANZ**

ren@tricoREALTY.com  
License #01192242

**Trico Realty, Inc.**

3100-A Pullman Street  
Costa Mesa, CA 92626  
(714) 751-4420 • License #00342120

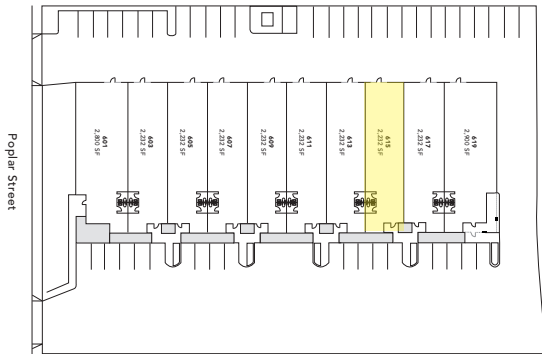
For additional information  
Visit Our Website at [www.TricoRealty.com](http://www.TricoRealty.com)



**FOR LEASE 2,232 SF**



**615 N. Poplar Street**



**Power:** 100A | 120/208

**Clearance Height:** 17'

**Ground Level Doors:** One 10'x12'

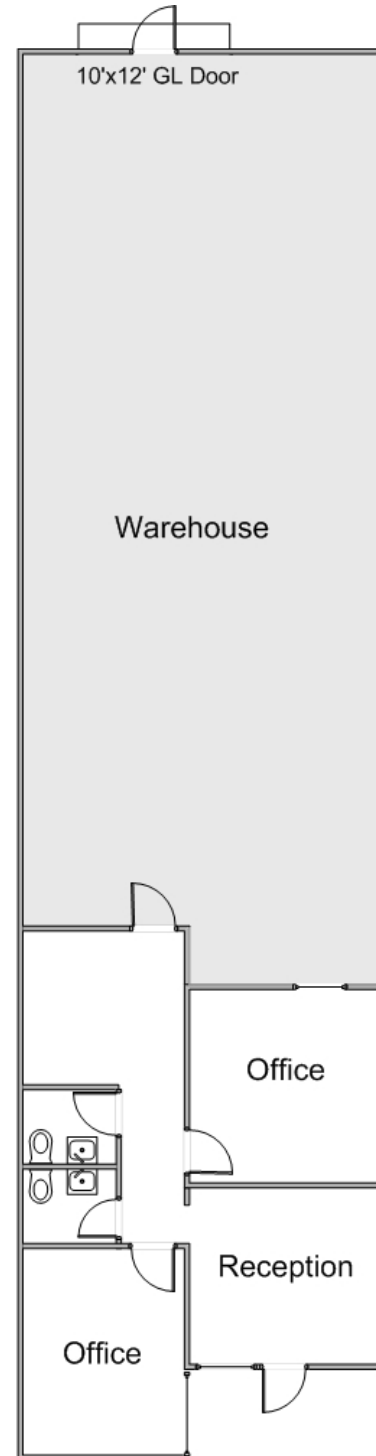
**FOR FURTHER DETAILS:**

**PARKER ROBERTS**  
parker@tricoREALTY.com  
License #01994597

**REN GLANZ**  
ren@tricoREALTY.com  
License #01192242

OFFICE: 714.751.4420

**WWW.TRICOREALTY.COM**





**PARKER ROBERTS**  
parker@tricoREALTY.com  
License #01994597

**REN GLANZ**  
ren@tricoREALTY.com  
License #01192242

For additional information  
Visit Our Website at [www.TricoRealty.com](http://www.TricoRealty.com)



This information has been furnished from sources which we deem reliable; however, we do not guarantee its accuracy and assume no liability. Do not rely on any of the information contained herein without verifying it yourself directly with the listing broker or owner.