

FOR LEASE

6,000 Square Foot Unit



FEATURES:

OFFICE FEATURES:

- +/- 1,300 Square Feet
- Air Conditioned / Heated
- Two (2) Restrooms
- Fully Carpeted

WAREHOUSE FEATURES:

- +/- 4,700 Square Feet
- 200 Amps, 120/208 Volts 3 Phase
- 100 Amps, 120/208 Volts Single Phase
- One (1) 10'x12' Ground Level Doors
- 18' Clearance
- Warehouse Restroom

OTHER FEATURES:

- Exterior LED Security Lighting
- Drive Around Building
- M-1 Zone
- Conveniently Located Near the 5, 57, and 22 Freeways



**1525 W. Orange Grove, Unit A
Orange, CA 92868**



This information has been furnished from sources which we deem reliable; however, we do not guarantee its accuracy and assume no liability. Do not rely on any of the information contained herein without verifying it yourself directly with the listing broker or owner.

**FOR FURTHER
DETAILS:**

ERIN GARNER

erin@tricoREALTY.com
License #2228139

DAVID KLING

david@tricoREALTY.com
License #01965659

Trico Realty, Inc.

3100-A Pullman Street
Costa Mesa, CA 92626
(714) 751-4420 • License #00342120

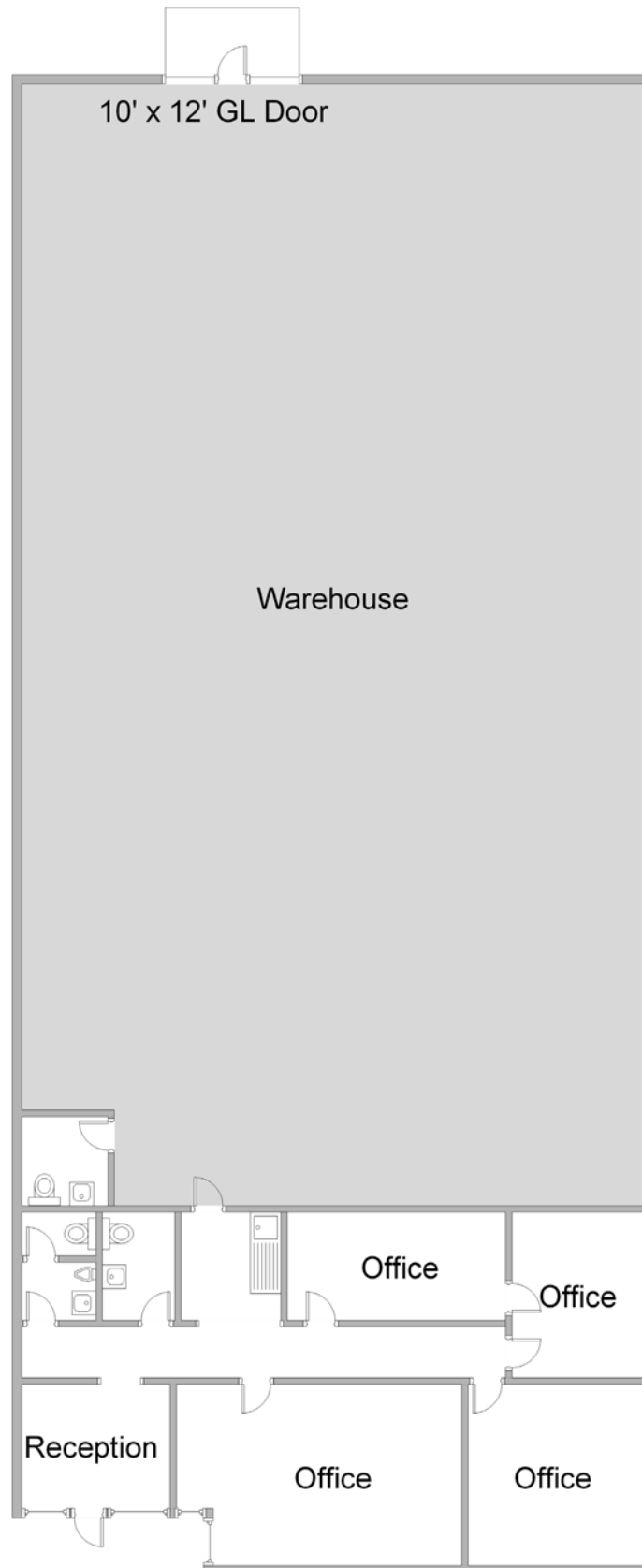
For additional information
Visit Our Website at www.TricoRealty.com



1525 W. Orange Grove, Unit A
Orange, CA 92868

FOR LEASE

6,000 Square Foot Unit



Trico Realty, Inc.

3100-A Pullman Street
Costa Mesa, CA 92626

(714) 751-4420 • License #00342120

For additional information
Visit Our Website at www.TricoRealty.com

