



22865 Savi Ranch Parkway, Unit A, Yorba Linda, CA, 92887
1,593 Sq. Ft.

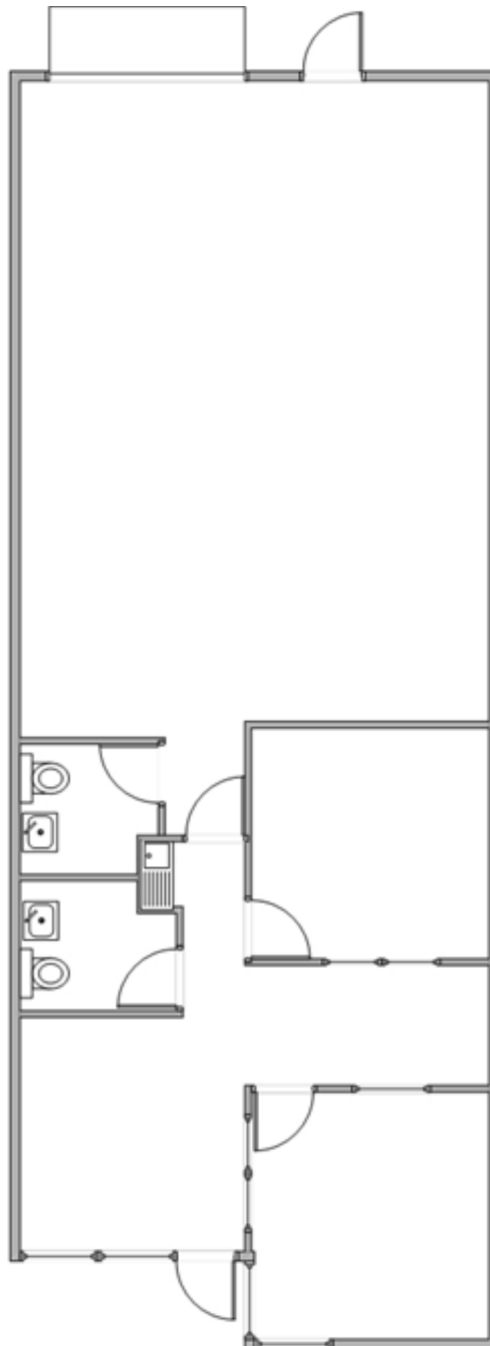
**For Further Information,
please contact:**

Ren Glanz
DRE#01192242
ren@tricoREALTY.com
714-751-4420

Mark Hintergardt /
Pat Delaney
DRE#0096286/00865136
pdelaney@lee-associates.com/
mhintergardt@lee-associates.com
714-751-4420

Visit us at
www.tricoREALTY.com

Not to Scale



3100-A Pullman St.
Costa Mesa, CA 92626

O: 714.751.4420
F: 714.540.4579

TricoRealty.com

BROKERAGE
DEVELOPMENT
MANAGEMENT