



FOR LEASE

1,100-2,304 Square Foot Units

FEATURES:

- Airport, 405, 55, & 73 Freeway Close
- Private Front Office
- Renovated Office
- Time Warner Business Class Cable
- Restroom

WAREHOUSE FEATURES:

- 12' X 12' Rear Overhead Doors
- 40-100 Amps / Single & 3 Phase Power
- 14' Clearance
- Exterior Security Lighting
- Fire Sprinklers (Buildings 2931, 2940 & 2941)



2930-2941 Grace Lane, Costa Mesa, CA 92626



FOR FURTHER DETAILS:

DAVID KLING

david@tricoREALTY.com
License #01965659

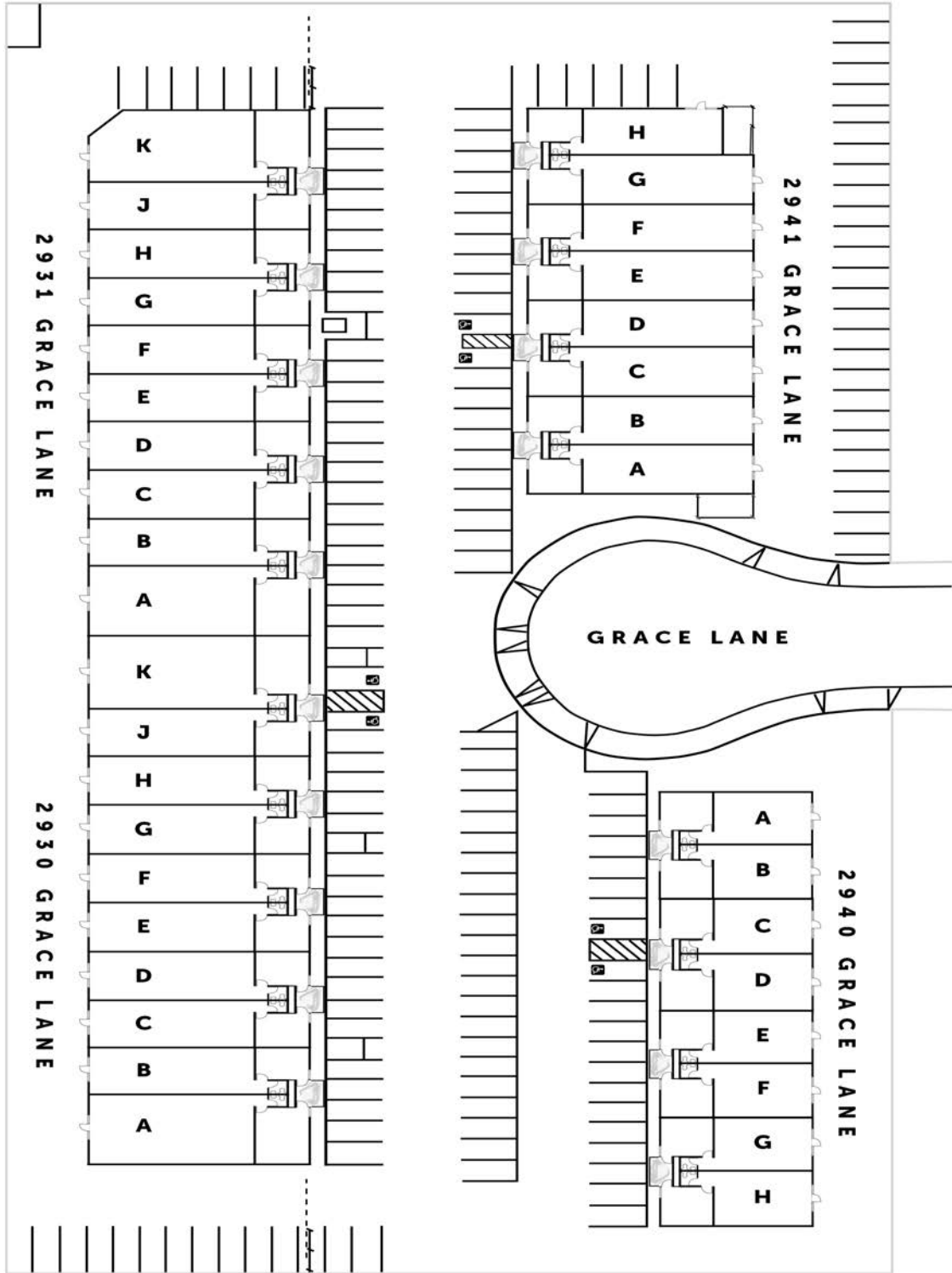
Trico Realty, Inc.

3100-A Pullman Street
Costa Mesa, CA 92626
(714) 751-4420 • License #00342120

For additional information
Visit our Website at www.TricoRealty.com



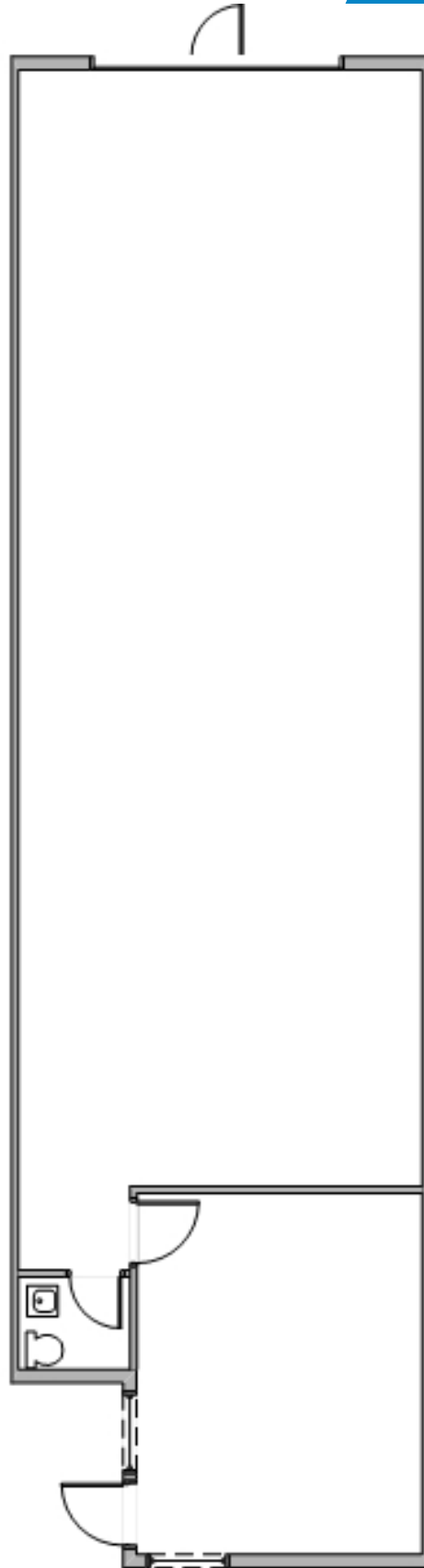
This information has been furnished from sources which we deem reliable; however, we do not guarantee its accuracy and assume no liability. Do not rely on any of the information contained herein without verifying it yourself directly with the listing broker or owner.



2930 - 2941 Grace Lane
Costa Mesa, CA 92626

FOR LEASE

1,100 - 2,304 Square Foot Units



Trico Realty, Inc.

3100-A Pullman Street
Costa Mesa, CA 92626

(714) 751-4420 • License #00342120

For additional information
Visit our Website at www.TricoRealty.com

