



22815 Savi Ranch Parkway, Unit B, Yorba Linda, CA, 92887
1,542 Sq. Ft.

For Further Information, please contact:

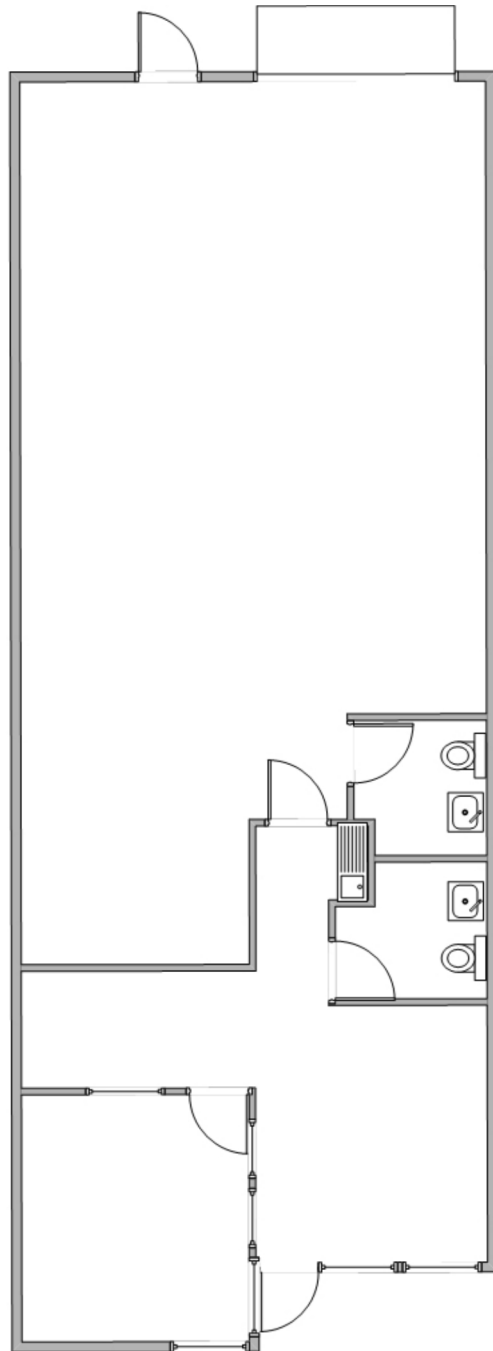
Ren Glanz
DRE#01192242
ren@tricoREALTY.com
714-751-4420

Mark Hintergardt
DRE#0096286
/mhintergardt@lee-associates.com

Pat Delaney
DRE# 00865136
pdelaney@lee-associates.com
714-751-4420

Visit us at
www.tricoREALTY.com

Not to Scale



3100-A Pullman St.
Costa Mesa, CA 92626

O: 714.751.4420
F: 714.540.4579

TricoRealty.com

**BROKERAGE
DEVELOPMENT
MANAGEMENT**