



FOR LEASE

2,328 Square Foot Industrial Unit

FEATURES:

OFFICE FEATURES:

- Fully Heated & Air Conditioned

WAREHOUSE FEATURES:

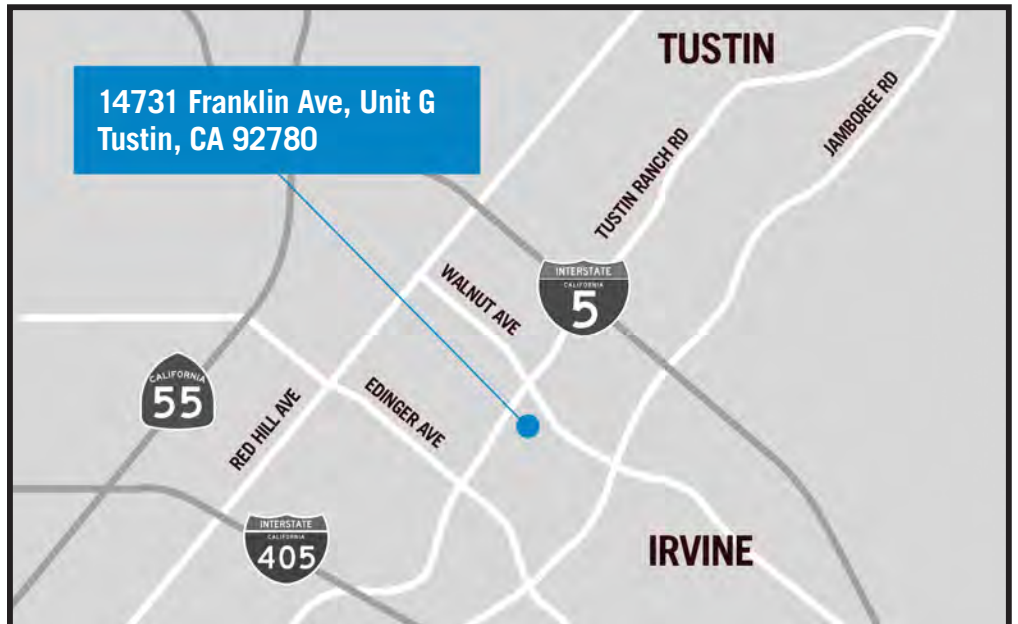
- 3 Phase Power, 200 Amps
120/208 Volt
- 12'X12' Ground Level Door
- 16' Clearance
- Warehouse Skylights
- Floor Drain
- 1,706 SF of Warehouse Space

OTHER FEATURES:

- Exterior LED Lighting
- Fire Sprinklers
- Conveniently located near the 5 freeway
- Adjacent to The Village at Tustin Legacy



14731 Franklin Ave, Unit G, Tustin, CA 92780



This information has been furnished from sources which we deem reliable; however, we do not guarantee its accuracy and assume no liability. Do not rely on any of the information contained herein without verifying it yourself directly with the listing broker or owner.

FOR FURTHER DETAILS:

PARKER ROBERTS

parker@tricoREALTY.com
License #01994597

REN GLANZ

ren@tricoREALTY.com
BRE#01192242

Trico Realty, Inc.

3100-A Pullman Street
Costa Mesa, CA 92626
(714) 751-4420 • License #00342120

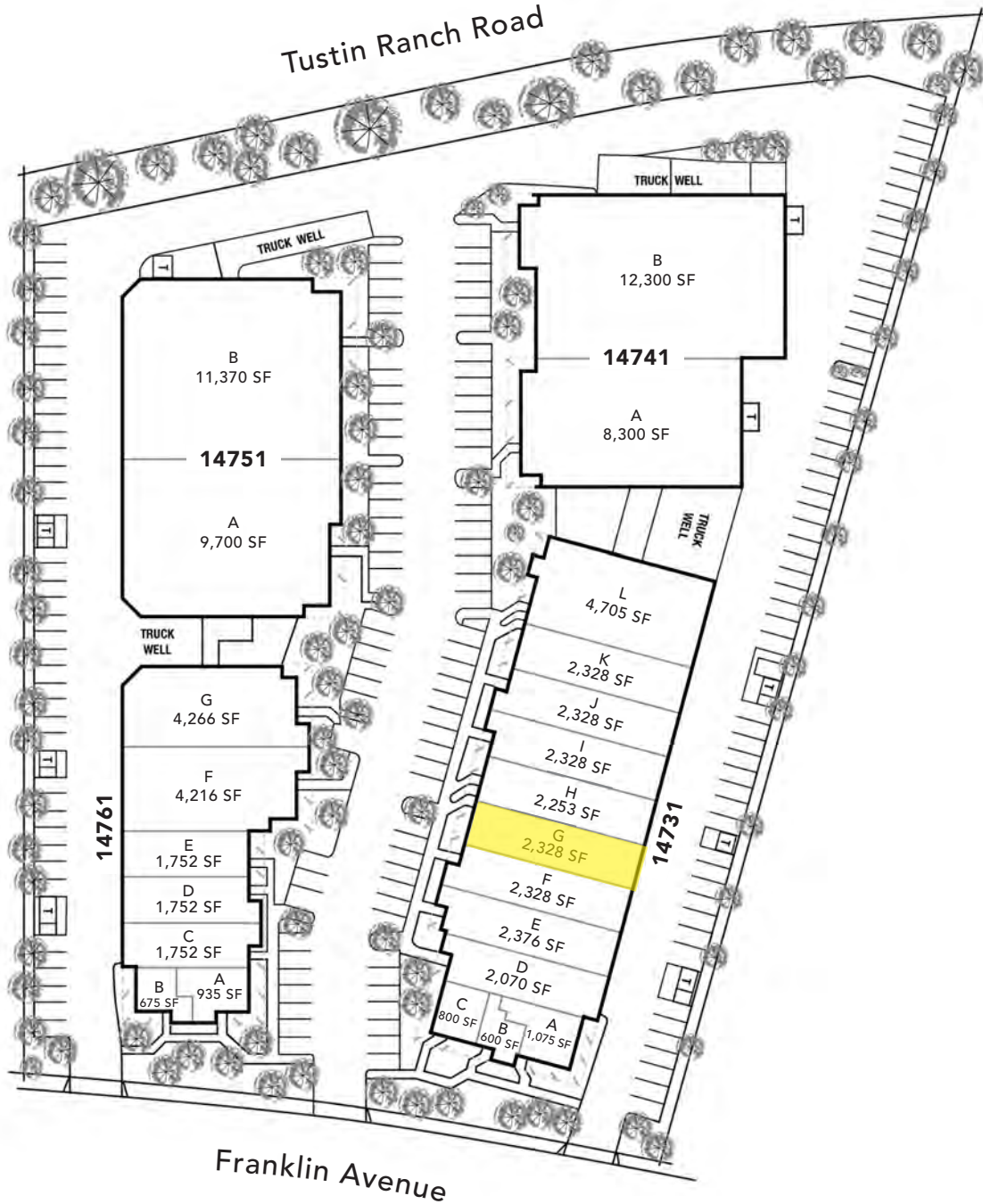
For additional information
Visit our Website at www.TricoRealty.com



14731 Franklin Ave, Unit G
Tustin, CA 92780

FOR LEASE

2,328 Square Foot Industrial Unit



Trico Realty, Inc.

3100-A Pullman Street
Costa Mesa, CA 92626

(714) 751-4420 • License #00342120

For additional information

Visit our Website at www.TricoRealty.com





14731 Franklin Avenue, Unit G, Tustin, CA, 92780
2,328 Sq. Ft.

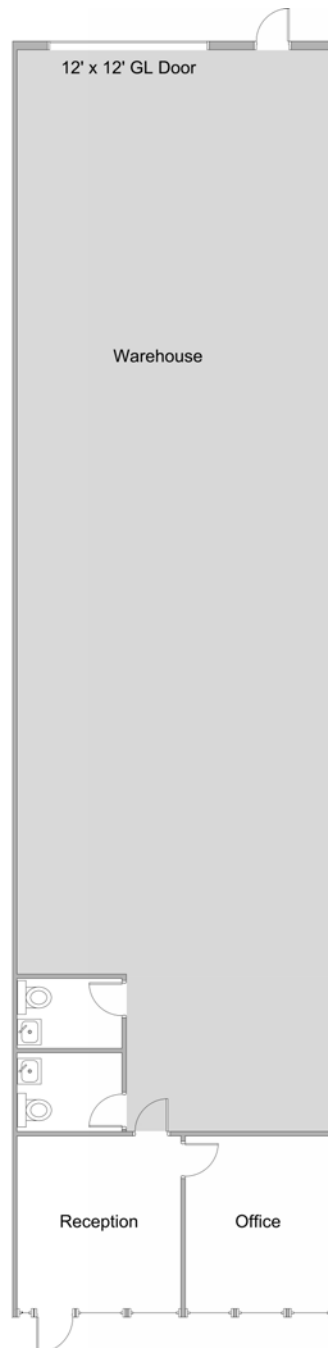
**For Further Information,
please contact:**

Parker Roberts
DRE#01994597
parker@tricoREALTY.com
714-751-4420

Ren Glanz
DRE#01192242
ren@tricoREALTY.com
714-751-4420

Visit us at
www.tricoREALTY.com

Not to Scale



3100-A Pullman St.
Costa Mesa, CA 92626

O: 714.751.4420
F: 714.540.4579

TricoRealty.com

**BROKERAGE
DEVELOPMENT
MANAGEMENT**